

ALL SS PRESSURE GAUGE

BOURDON TYPE

BBD

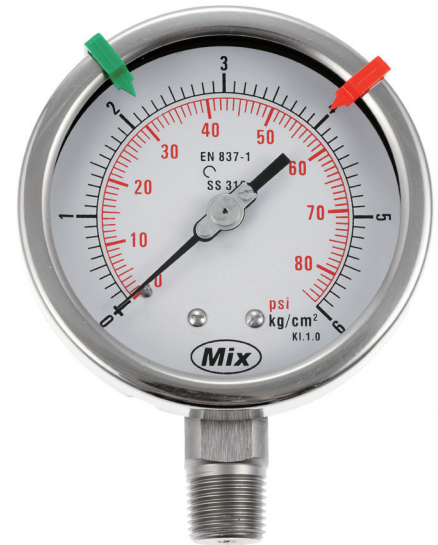


SPECIAL FEATURES

- STAINLESS STEEL CASE & MEASURING SYSTEM
- COST EFFECTIVE
- DRY OR LIQUID FILLED
- ACCURACY UP TO 0.5%
- STANDARD FOLLOWED IN GENERAL EN 837-1/ & ANSI/ ASME B40.1 FORNS125MM

APPLICATIONS

FOOD & BEVERAGE, PHARMACEUTICAL, CRYOGENICS, CHEMICAL & PETROCHEMICAL INDUSTRIES, CONVENTIONAL & NUCLEAR POWER PLANTS, PUMPS, HYDRO-CLEANING MACHINES, PRESSES, ENGINE COMPRESSORS, TURBINES, DIESEL ENGINES & REFRIGERATING PLANT



SPECIFICATIONS

STANDARD VERSION: 100mm, 125mm, 150mm

Accuracy	: ± 1.0% Of F.S.
Ambient temperature	: -25°C to +60 °C
Process temperature	: Max. 300 °C
Operating pressure	: 75% of the scale value
Over pressure limit	: 30% for pressure ranges up to 600 kg/cm ² 15% for pressure ranges above 600 kg/cm ²

Case	: AISI 316 SS, 304 SS
Ring	: AISI 316 SS, Bayonet Type
Socket	: AISI 316 SS (Directly Welded to Case)
Bourdon	: AISI 316 SS
Movement	: AISI 304 SS
Jointst	: TIG argon arc welding

Protection	: IP65
Dial	: Aluminium, black graduation on white background
Pointer	: Aluminium, black coloured Micrometer zero adjustable
Window	: Plexi Glass
Gasket	: Silicon rubber
Filling Plug	: Neoprene

GLYCERINE FILLED VERSION (OPTION PY)

Accuracy	: ±1.6% Of F.S.
Ambient Temperature	: Maximum. 65 °C
Process Temperature	: +15°C/65°C
Window	: Plexi Glass
Dampening Liquids	: Glycerine 98% (others available as option)
Other Features	: Refer Specification of Standard Version

DRY BUT FILLABLE VERSION

Option Code	: Fillable Dampening Liquid
C4	: For Glycerine 98%
C5	: For silicon Oil